

# PARASTERNAL LONG AXIS IMAGE

## PATIENT & PROBE POSITIONING

### Patient Position:

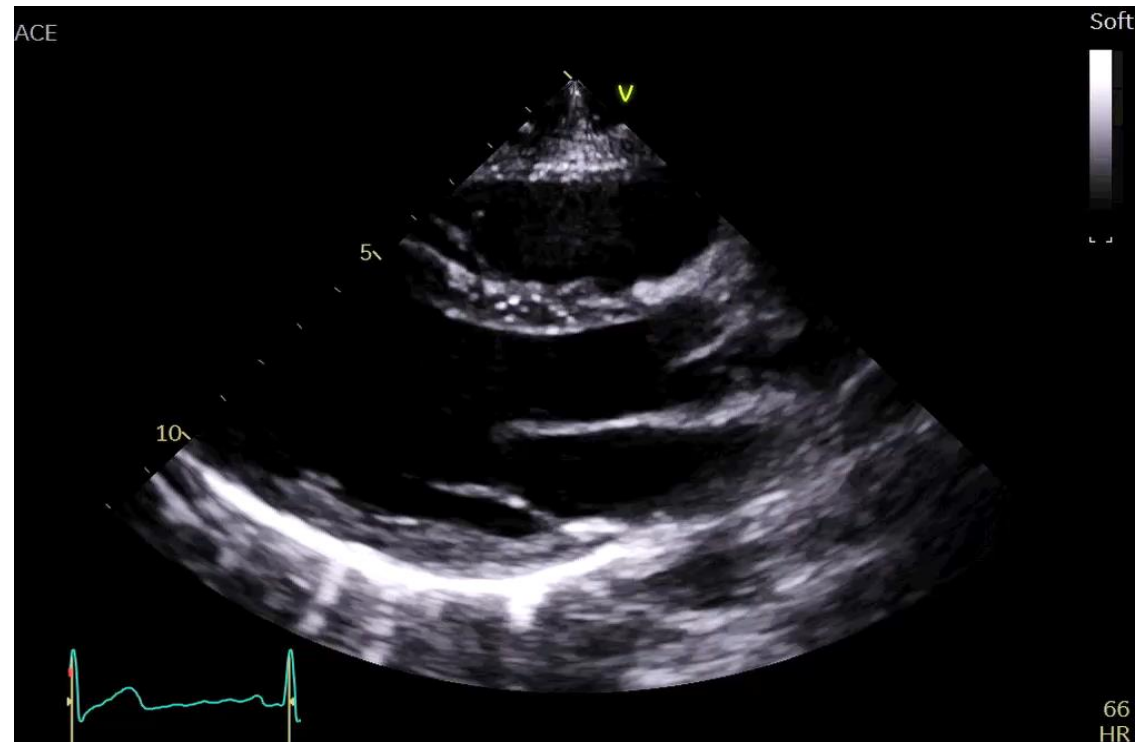
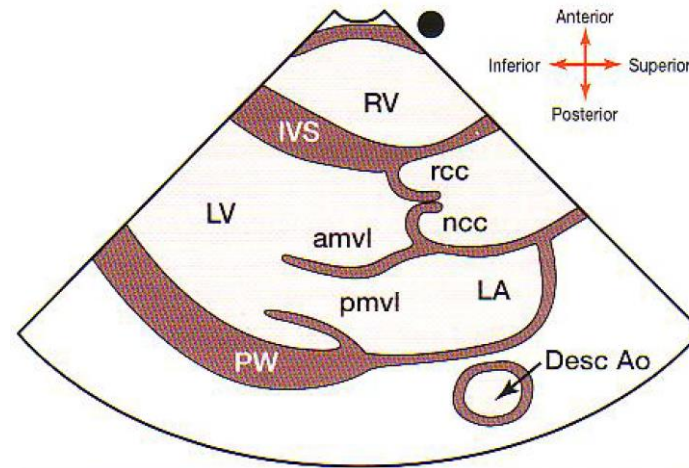
- Left lateral decubitus position with arm above the head

### Transducer Position and Orientation:

- Placed around 3rd, 4th or 5th intercostal space immediately to the left of the sternum
- Probe marker rotated to approximately 11 o'clock (pointing at the patient's right shoulder)



## IMAGE & STRUCTURES



# PARASTERNAL SHORT AXIS IMAGE

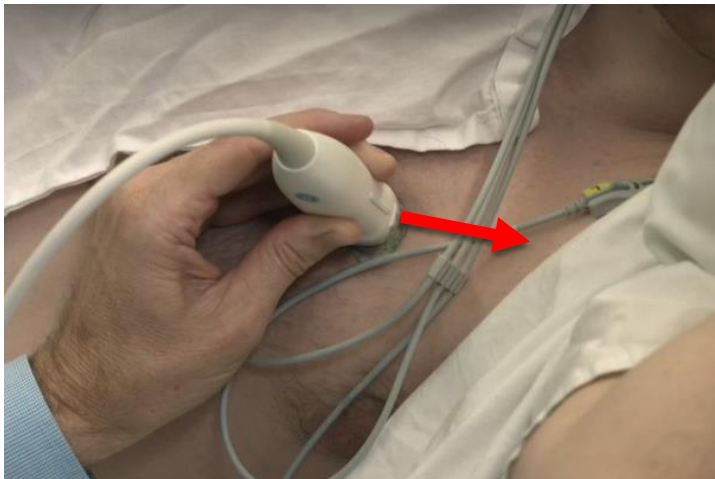
## PATIENT & PROBE POSITIONING

### Patient Position:

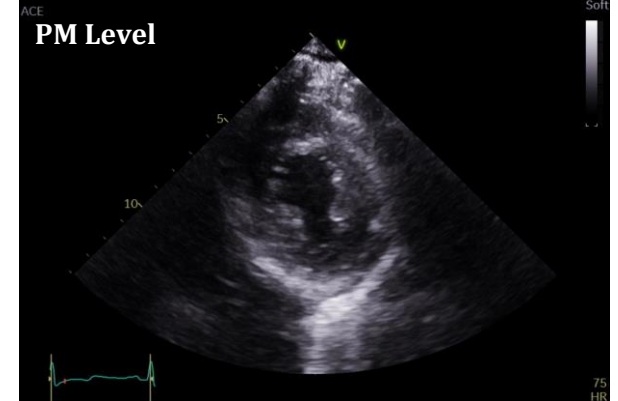
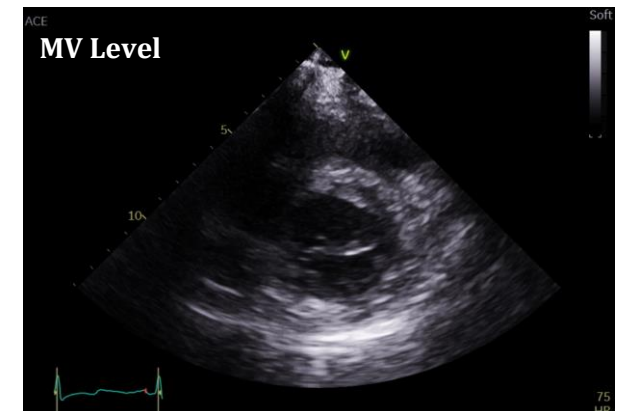
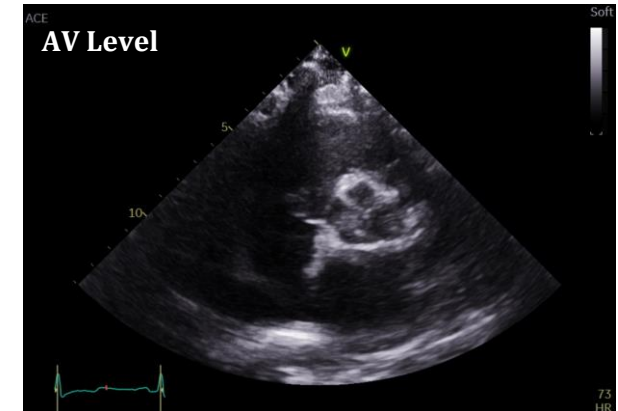
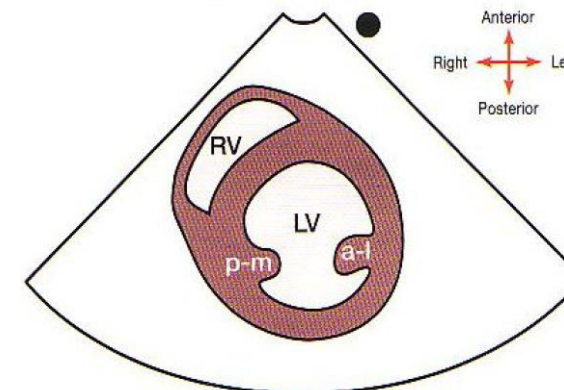
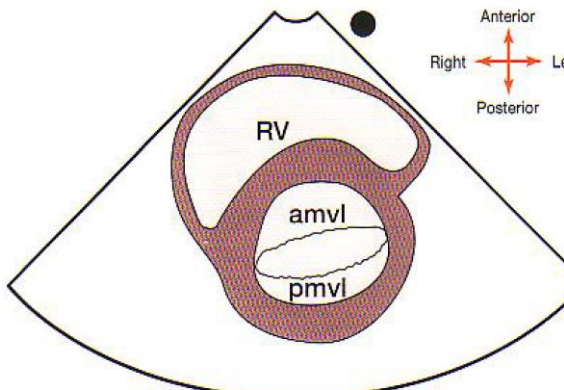
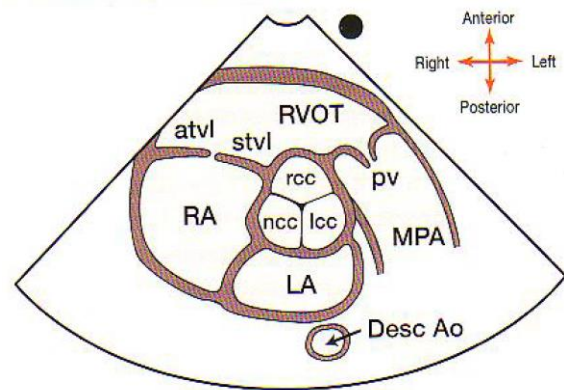
- Left lateral decubitus position with arm above the head

### Transducer Position and Orientation:

- Same location as parasternal long axis view (3rd, 4th or 5th intercostal space left of the sternum)
- Probe marker rotated 90° clockwise from the parasternal long axis to ~1 o'clock (pointing at the patient's left shoulder)
- Probe is tilted inferolaterally from the AV level to visualise the MV and papillary muscle.



## IMAGES & STRUCTURES



# APICAL 4 CHAMBER VIEW

## PATIENT & PROBE POSITIONING

### Patient Position:

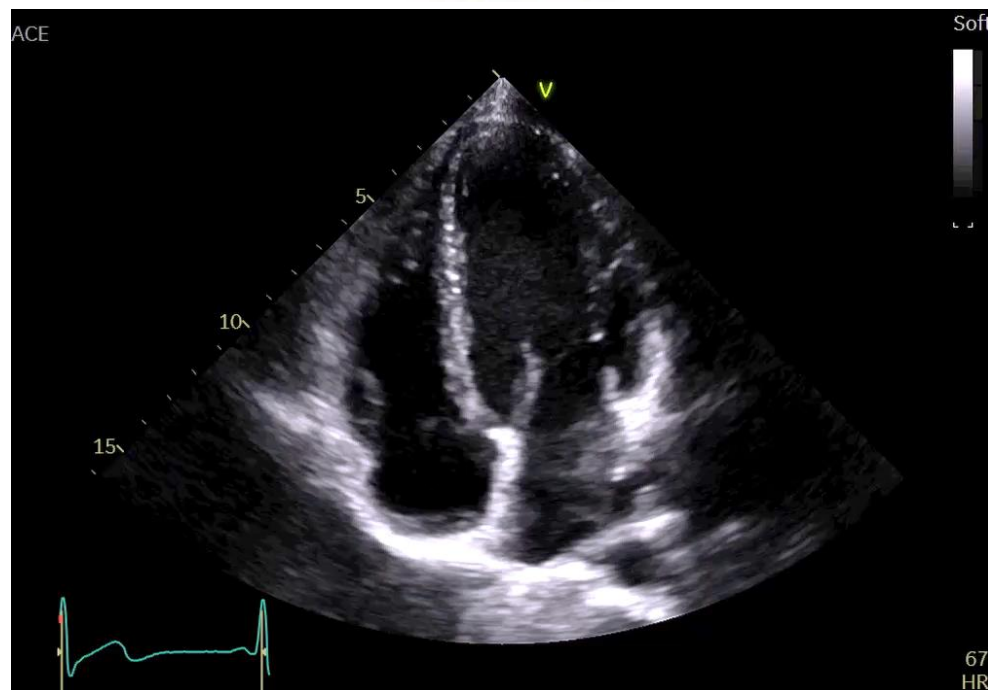
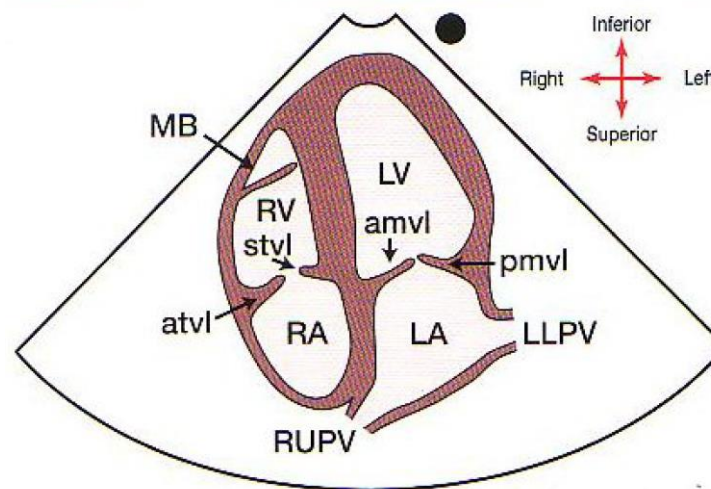
- Left lateral decubitus position with arm above the head

### Transducer Position and Orientation:

- Placed in the fifth intercostal space at the mid-axilla region (the position of the V5 electrode on the 12-lead ECG)
- Probe marker rotated to approximately 3 o'clock (directed towards the bed)



## IMAGES & STRUCTURES



# APICAL 2 CHAMBER VIEW

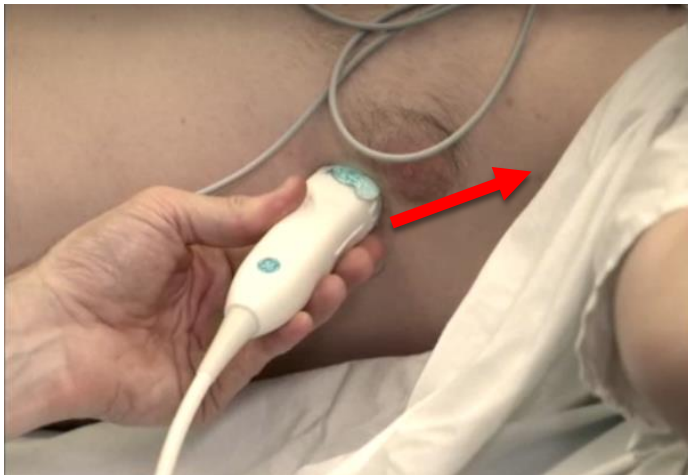
## PATIENT & PROBE POSITIONING

### Patient Position:

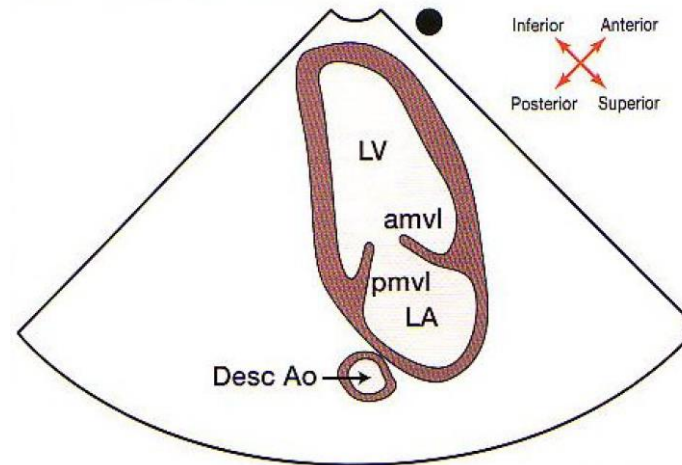
- Left lateral decubitus position with arm above the head

### Transducer Position and Orientation:

- Same location as apical 4 chamber view (Fifth intercostal space at the mid-axilla region).
- Probe marker rotated  $\sim 60^\circ$  degrees counter-clockwise from the apical 4 chamber view (around 1 o'clock).



## IMAGES & STRUCTURES



# SUBCOSTAL 4 CHAMBER VIEW

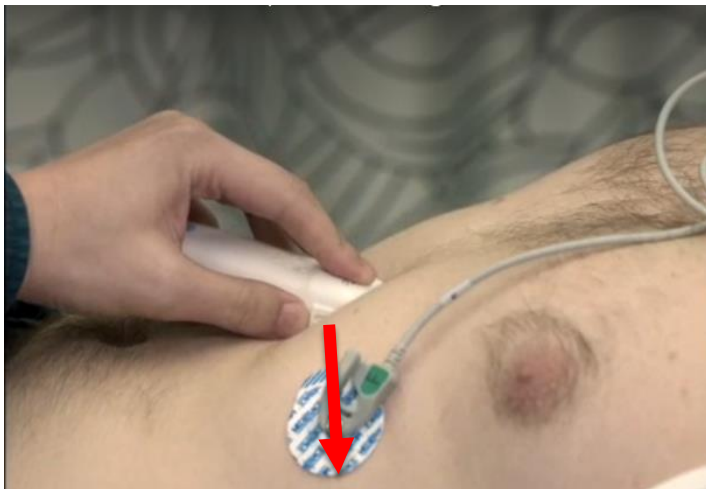
## PATIENT & PROBE POSITIONING

### Patient Position:

- Supine position with knees bent

### Transducer Position and Orientation:

- Placed in the subxiphoid position immediately inferior to the sternum along the midline with the probe directed towards the patient's left clavicle
- Probe marker rotated to ~3 o'clock (towards the patient's left side)



## IMAGES & STRUCTURES

